

LOOKING BACK AT 2025'S CELEBRATION OF METHODIST EDUCATION




Methodist Schools





You and the schools that you serve are beacons of light, hope, love and faith in a world and in communities in desperate need of those things.

REV. RICHARD ANDREW
PRESIDENT OF THE METHODIST CONFERENCE



**THE 2025 CELEBRATION OF
METHODIST EDUCATION,**
organised by Methodist
Schools and hosted by
the Southlands Methodist
Trust and the Susanna
Wesley Foundation at the
University of Roehampton,
brought together school
leaders from across the
Methodist family for a day
of inspiration, challenge and
connection.

From opening devotions
with the President of the
Methodist Conference
to specialist sessions on
SEND, faith formation and
compassionate education,
the day offered something
to stretch and sustain
everyone in the room.

METHODIST
EDUCATION



Methodist Scho



EPWORTH



This booklet captures the spirit of a landmark occasion. You'll find highlights from the key sessions — with links to video recordings — alongside words from our speakers and the voices of those who were there. The feedback from participants was encouraging: people left feeling seen, resourced and renewed in their sense of vocation.

If you were there, we hope this brings it all back. If you weren't, we hope it gives you a sense of what's to come at 2026's Celebration of Methodist Education.



As a new Head of School, feeling quite overwhelmed and out of my depth, it was a precious reminder to lift my eyes and remember that this is not a job but a sacred calling.

FEEDBACK FROM A PARTICIPANT



MISSION


Rev. Richard Andrew, the President of the Methodist Conference, drew us back to our common vocation to nurture children and young people in all their wonder, wisdom and complexity.



FROM
RICHARD
ANDREW'S
ADDRESS

CLICK TO
WATCH THE
ADDRESS
ON
YOUTUBE

So much of our pedagogy today focuses upon children as economic units, as functional units, rather than the wonder and joy of learning and what is being formed in us as citizens of love. I wonder if that's something distinctive we might have to offer?



CULTURE

Rachel Johnson, CEO of PiXL, challenged us to think about the importance of the deliberate cultivation of connection and belonging in our schools.




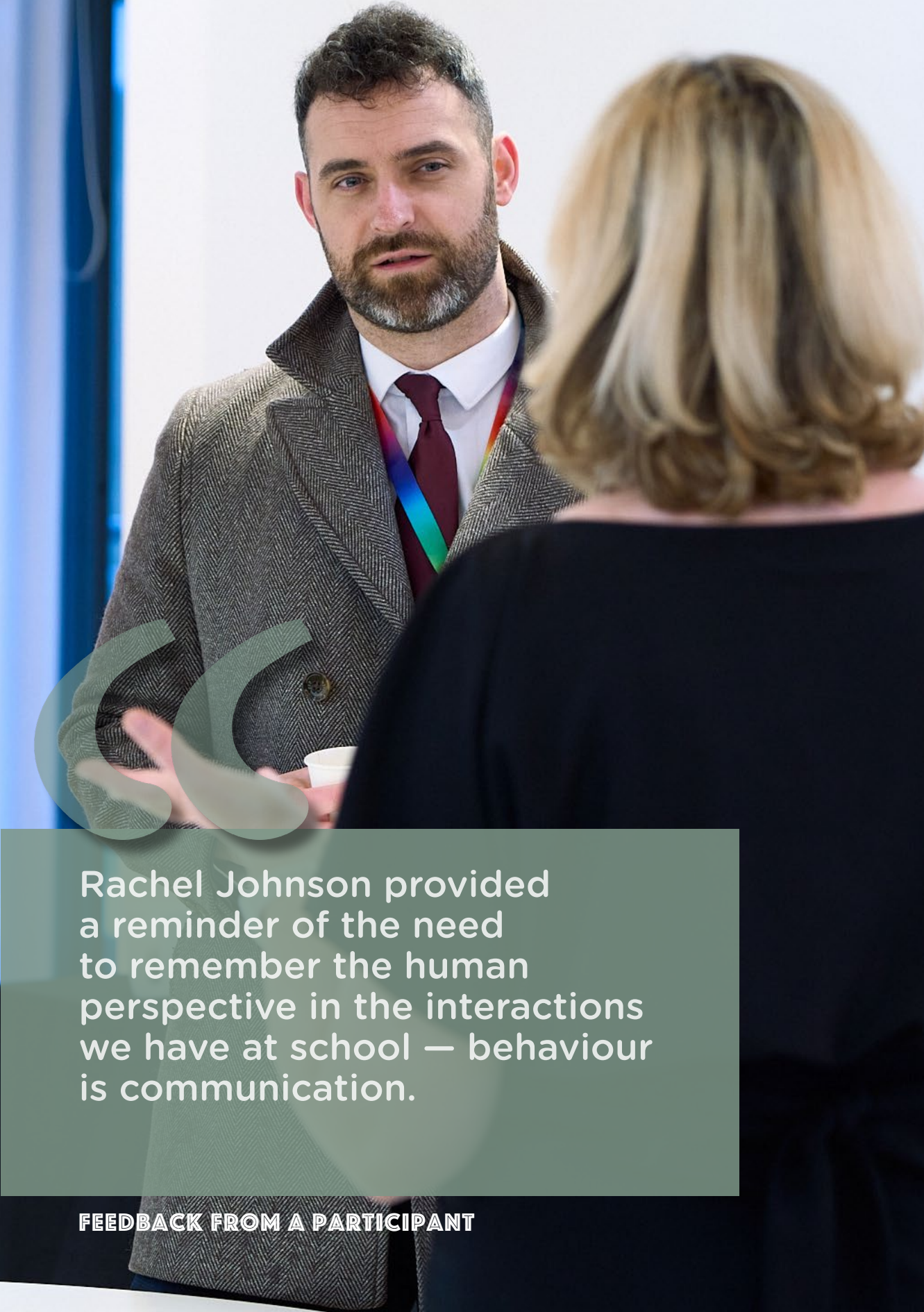


FROM
RACHEL
JOHNSON'S
KEYNOTE

CLICK TO
WATCH THE
KEYNOTE
ON
YOUTUBE

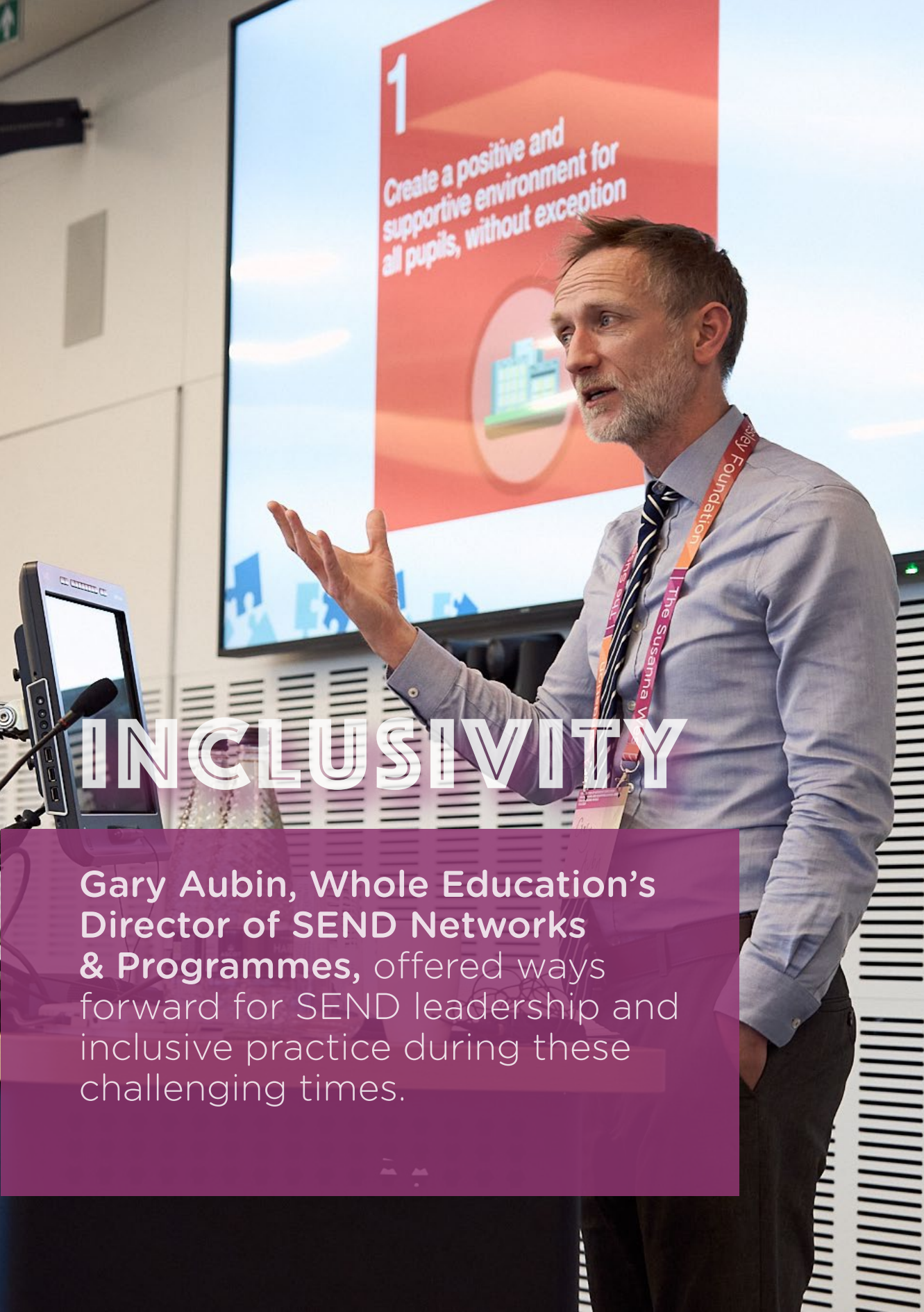
We have the ability to create belonging and connection and to speak into the lives of children in ways that barely anybody else in society now has the power to do. We are the last remaining place where people of any belief, any background, come together and act as one. We are bringers and deliverers of hope — but would I see, hear, feel, sense it in your school if I came to visit?





Rachel Johnson provided a reminder of the need to remember the human perspective in the interactions we have at school — behaviour is communication.

FEEDBACK FROM A PARTICIPANT



1
Create a positive and
supportive environment for
all pupils, without exception

INCLUSIVITY

Gary Aubin, Whole Education's Director of SEND Networks & Programmes, offered ways forward for SEND leadership and inclusive practice during these challenging times.

FROM
GARY
AUBIN'S
KEYNOTE

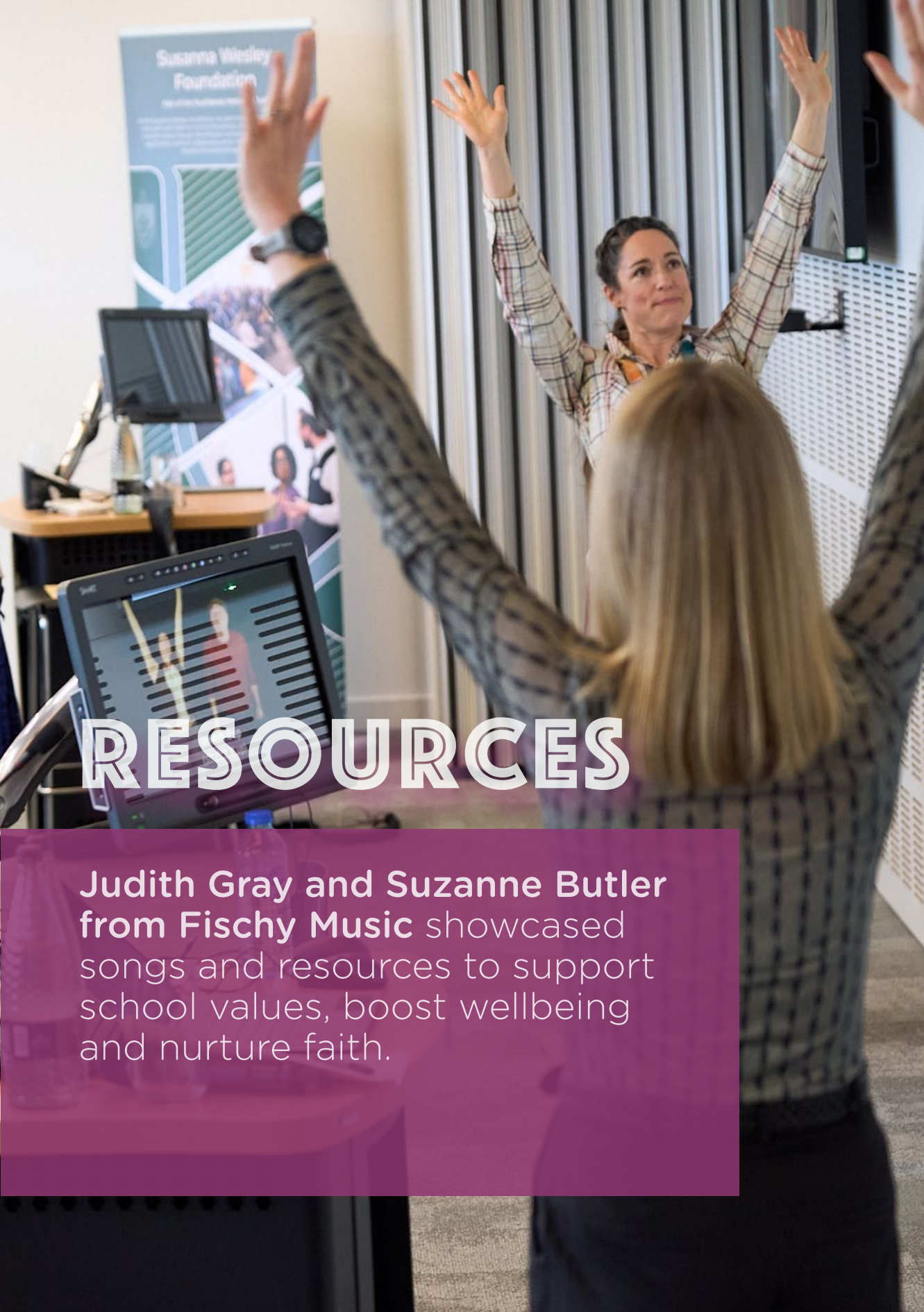
CLICK TO
WATCH THE
KEYNOTE
ON
YOUTUBE

We are proudly inclusive — it's the heart of who we are and what we do, and it's the result of so many good changes in our society as well. But if we're still working from the same list of what made us inclusive that we wrote down ten years ago, we're not as inclusive as we think we are — because our pupil cohort has changed. Today, are we maximising inclusion? What do we do for everyone because it particularly helps some pupils but is broadly beneficial for all, and harms no one?



On returning home, much more thought has gone into developing my culture. The talk on SEND was very useful in challenging my thinking on inclusion.

FEEDBACK FROM A PARTICIPANT



RESOURCES

Judith Gray and Suzanne Butler from Fischy Music showcased songs and resources to support school values, boost wellbeing and nurture faith.

CLICK TO
WATCH THE
FISCHY
MUSIC
SESSION
ON YOUTUBE

We are already a Fischy Music school but it was great to get a reminder of the breadth of their offer.

FEEDBACK FROM A PARTICIPANT

CELEBRATION OF METHUEN
ENCOURAGING YOUNG AND FOSTERING
IN A CHANGING WORLD
19.11.2023
hot
NSW



PAR design

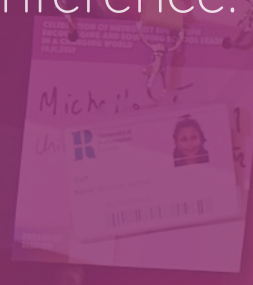
CYP are experts in

Study 1: Explore Stakeholders

► Purposive sampling of stakeholders: (e.g. health), parents

EXPERTS

Specialist workshops delved deeper into the key themes of the conference.





Good to bring the various leaders and partners in Methodist Schools together, some very good sessions, right balance of speakers and connections.

FEEDBACK FROM A PARTICIPANT

Christian Leadership in Schools

Julie-Ann Hewitt and Emma Pavey

Association of Methodist Education - 19th November 2025

LEADERSHIP

Julie-ann Hewitt, CEO of Epworth Education Trust, and Dr Emma Pavey from the Susanna Wesley Foundation spoke about the importance of creating space to support leaders.




I was given time and space to stand back and reflect and have some space to see the good we do despite the hectic nature of school life.

FEEDBACK FROM A PARTICIPANT



FROM
JULIE-ANN
HEWITT'S
ADDRESS

Education is tough at the moment, and we can't get away from that — it's more demanding than ever — and sometimes that business of going from place to place means that we're taken away from what really matters. We need space for deep thinking and to re-engage with the heart of what Methodist leadership is all about.



CONNECTIONS



I loved being with the wider Methodist family and celebrating together. I felt there was a good mix of educationally focused sessions and Methodist ethos sessions.

FEEDBACK FROM A PARTICIPANT



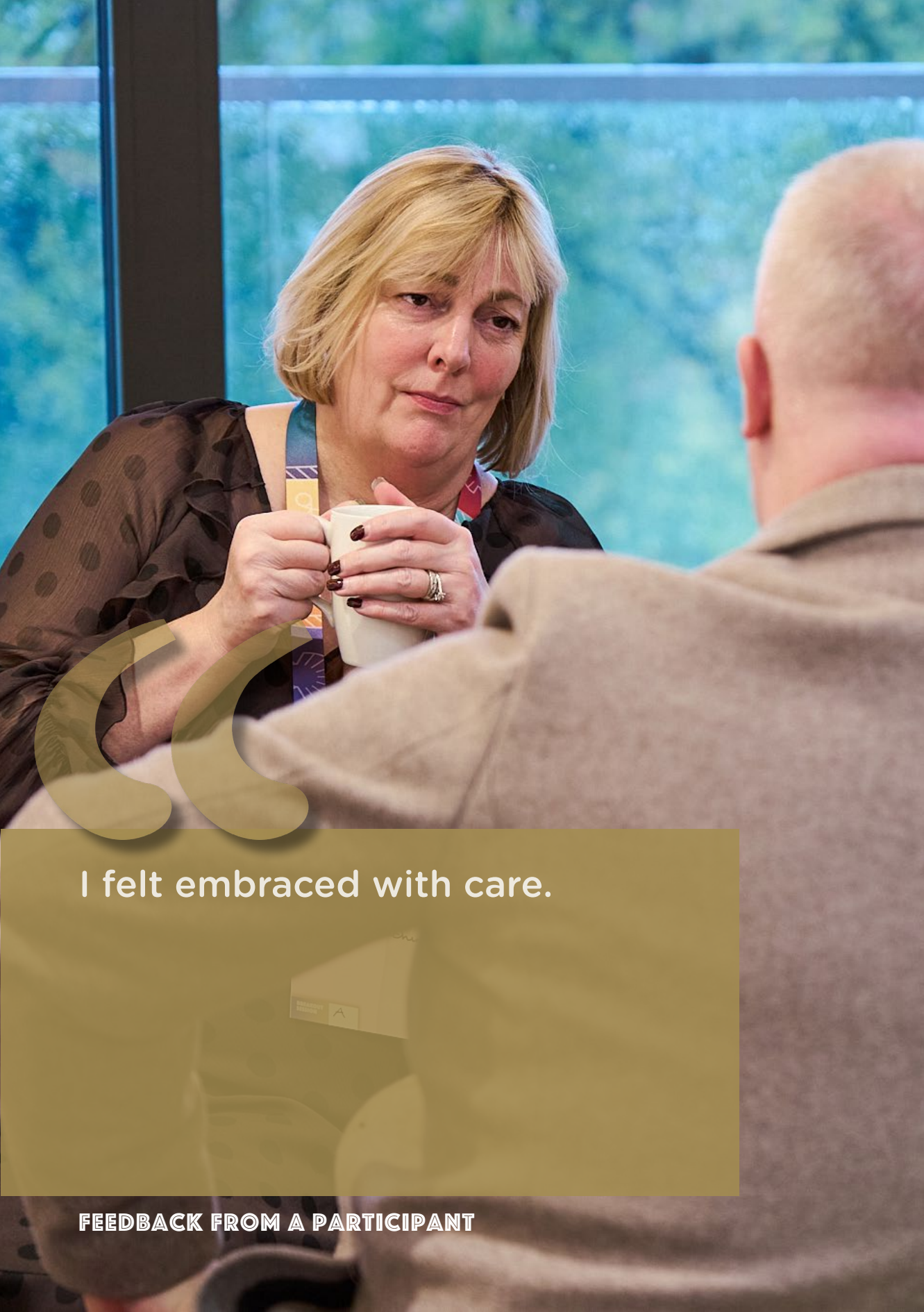
Loved the venue and the food
and the general ‘ethos’ of the
day — warm and welcoming.

FEEDBACK FROM A PARTICIPANT



Surrounded by the kindest and most inspirational people from our Methodist family, I was challenged to look again at our provision and to make sure we are all bringing the best version of ourselves every day.

FEEDBACK FROM A PARTICIPANT



I felt embraced with care.

FEEDBACK FROM A PARTICIPANT

LOOKING FORWARD

A day like this matters — because the work Methodist school leaders do matters. As our participants put it, the day offered space to stand back, breathe, and remember that what we nurture in ourselves is a sacred calling.

We're already looking forward to this year's Celebration of Methodist Education and we'd love you to be part of it. Whether you're joining us for the first time or returning, there's a place for you in this community — and we hope to see you there.





**CELEBRATION OF METHODIST
EDUCATION IS SUPPORTED BY THE
SUSANNA WESLEY FOUNDATION.**

The Susanna Wesley Foundation is a community of scholars and practitioners who promote dialogue, support research and create resources in order to equip churches and those who work in them, and to facilitate transformative change.

susannawesleyfoundation.org